

# The Bonc: 30 year Vision

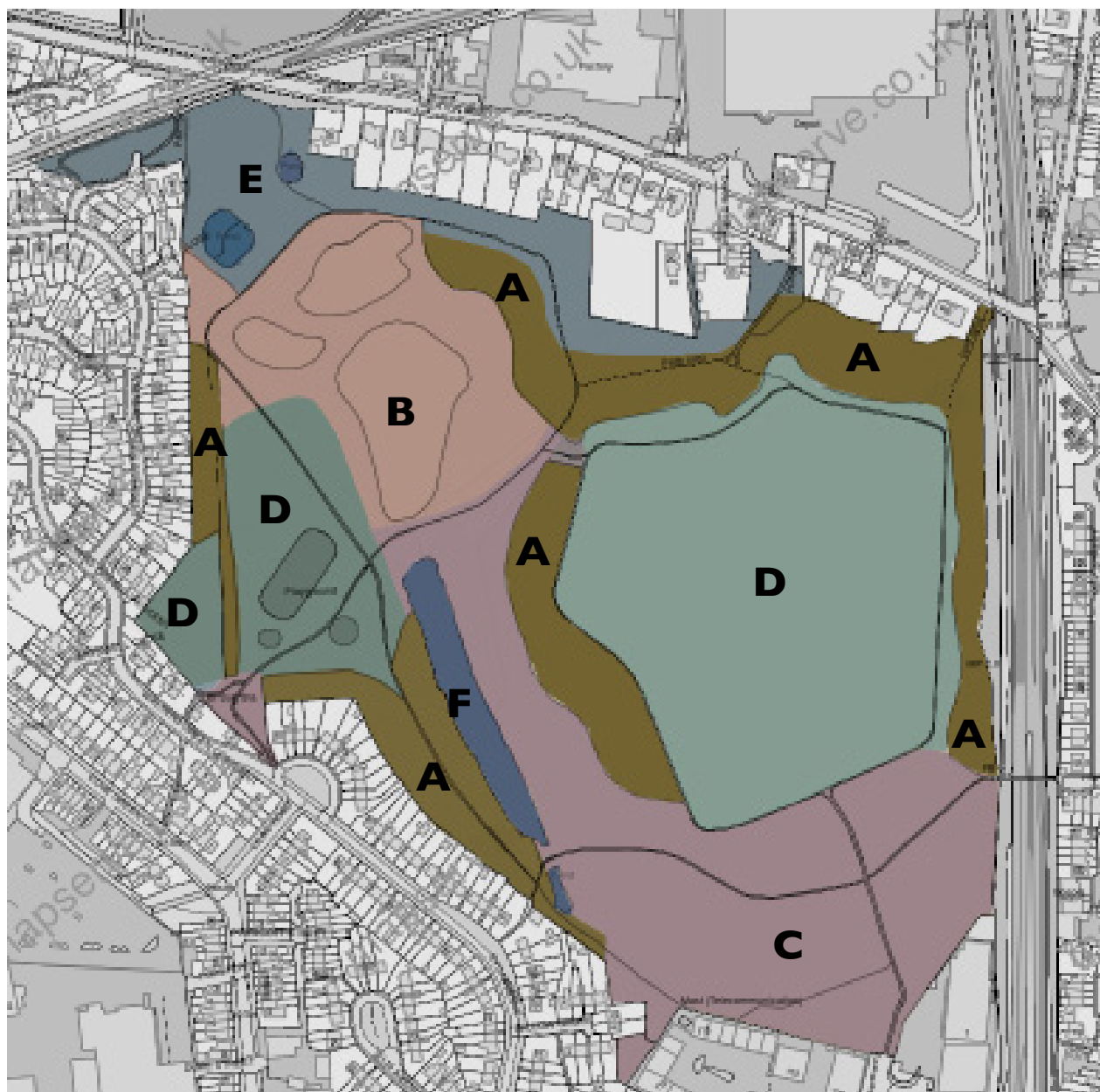


reShaped



## The Bonc Masterplan

### Assessment: Landscape Character



#### **A: Steeply Sloping Woodland Zone:**

- Steeply sloping single age, closely planted, native broadleaved woodland with little structural diversity. Footpaths muddy and encroached with bramble.

#### **B: Wet Woodland Zone:**

- Single age, closely planted, native broadleaved woodland with little structural diversity. Ground becomes wet and flooded over winter. Footpaths become impassable.

#### **C: Steeply Sloping Wood Pasture Zone:**

- Steeply sloping long grassland with young, widely spaced broadleaved and conifer tree planting.

#### **D: Plateau Grassland Zone:**

- Flat, open grassland / meadow with new tree planting. Compacted/ muddy footpath and defunct play areas, MUGA and meet shelters.

#### **E: Open Water and Stream Zone:**

- Matrix of open water, reeds, ditches, streams and wet woodland. Footpaths overgrown, muddy or impassible.

#### **F: Lake Zone:**

- Open water with steep slopes and reedy vegetation.

# The Bonc Masterplan

## Assessment: Barriers to Access



Impassable and hidden entrances



Non-inclusive barriers and steps



Muddy seating



Non-inclusive barriers



Hidden corners



Flooded footpath



Flooded play areas



Trolleys in the pond



Vandalised shelters



Views of unattractive fencing and buildings



Overgrown footpaths



Steps and unattractive park gateways

# The Bonc Masterplan

## Assessment: Opportunities



Beautiful water-bodies



Heritage



Semi-mature woodland



Established network of paths



Attractive long distance views



Near to where people live



Varied topography



Attractive open meadows and grasslands



Berries for winter wildlife



Attractive foliage colours



Rare Northern/Southern Marsh orchid hybrid in the meadow

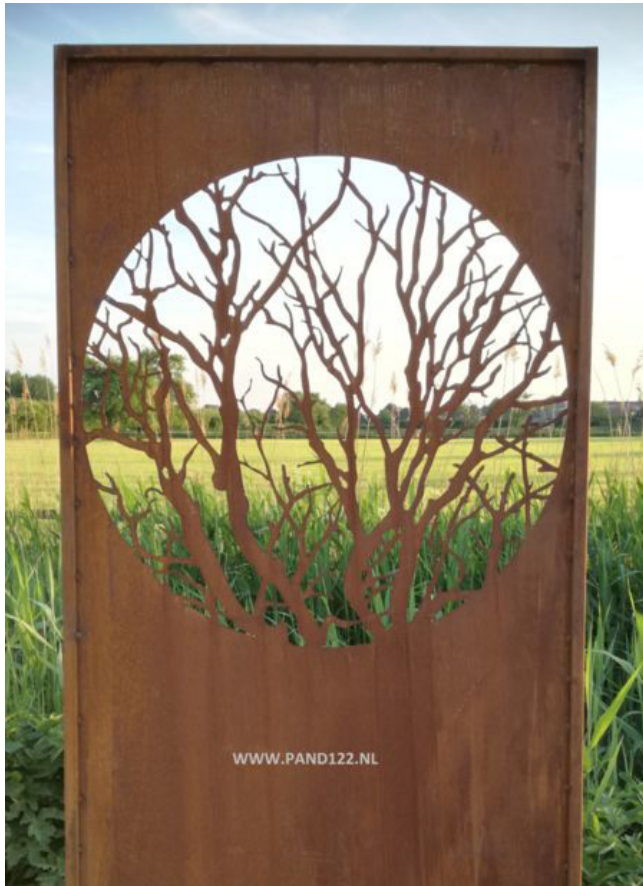


Rare Willow Tit using the wet woodland

# Landscape Masterplan: Concept: Entrance Strategy



Create bold, legible entrances that are visible, accessible, inviting and share a clear identity with each other. They should be designed to encourage people to cut through the park as part of their everyday activities and journeys. Consider heritage and wildlife theme to reflect local pride.



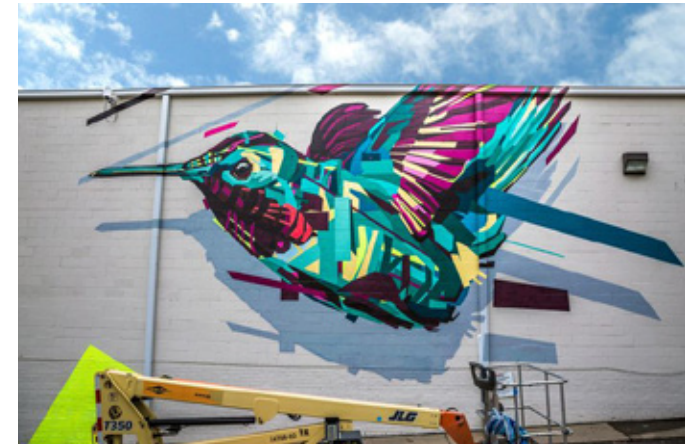
Lazer cut gateway and signage details highlighting the natural beauty and heritage of the site.



Defined gateways at footpath entrances



Inclusive and accessible entrances to be inclusive and accessible



Bold modern graphics drawing attention to park entrances, which are mostly hidden.



Eye catching route across railway bridge leading residents into the park

# Landscape Masterplan Concept: Concept: ABS Strategy



Increase informal surveillance and care of the Bonc by improving the visual condition, provide facilities that are wanted and needed by the local community and ensure that users feel safe during summer and dark winter evenings. Include young people in the regeneration process.



Increase numbers of people using the park and informal surveillance



Remove burnt out structures / teen shelters and replace with community seating places



Activities and facilities for young people including BMX track and skatepark



Improve the condition of the park entrances



Activities and facilities for young people such as fishing platforms and climbing structures.

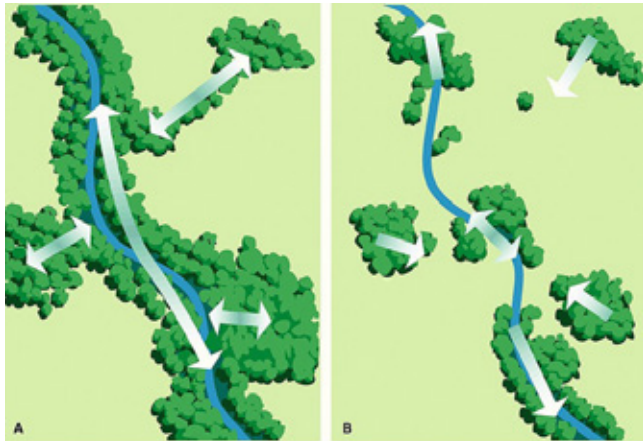


Lighting, CCTV and vegetation management to retain views around corners and entrances to ensure that the community feel safe.

# Landscape Masterplan Concept: Concept: Vegetation Strategy



Improve the resilience, connectivity, diversity and condition of habitats in the Bonc. Ensure that proposals meet local, migratory and rare wildlife, biodiversity and community needs, ensuring that there is a balance between providing access to nature and minimizing disturbance.



The Bonc connected with surrounding green infrastructure and wildlife commuting corridors.



Diverse age structure of trees, planted with long, lived and climate resilient species and highlight trees.



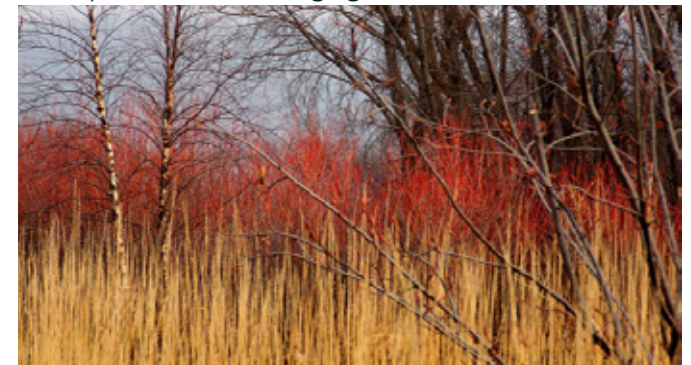
Edible species and fruit trees to encourage community and wildlife foraging



New planting and habitat creation to meet MCR biodiversity action plan goals, improve habitat for migratory birds and support Wigan's BNG goals.



Bulbs and understory vegetation to diversify vegetation structure of the woodlands and add beauty and interest.



Colourful vegetation within key locations to aid legibility and add interest to daily walks

# Landscape Masterplan Concept: Concept: Play Strategy



Encourage life-long, daily use of the Bonc, maximizing mental health, exercise, social cohesion, learning and access to nature benefits. Provide inclusive facilities that will engage everyone within the community.



Formal multi-age, social and inclusive play ground including swings, climbing nets, zipline



Natural and ecology play including stepping stones, balance beams and fishing platforms



Wheeled sports including BMX track, skate and scooter park and learning to ride track



Active play including sports court, trim trail and table tennis table



Play on the way including embankment slides, ropes, frisby golf



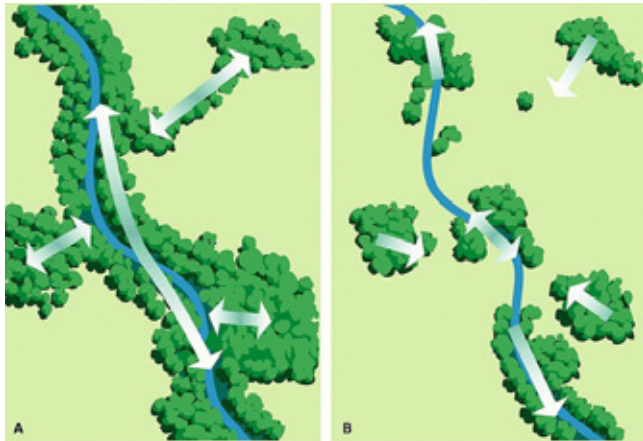
Open lawns for picnics, community gatherings and informal games

## Landscape Masterplan Concept:

### Concept: Active Travel and Footpath Route Strategy



Improve connectivity, inclusivity, year-round usability and condition of footpaths throughout the Bonc by creating a hierarchy of routes to meet active travel and recreation needs. Path surface should be suitable for purpose and fit in with the local landscape context.



Inclusive footpaths connected to surrounding public transport and walking-wheeled routes.



Direct, safe, inclusive and accessible primary active travel routes.



Adventurous tertiary routes encouraging contact with nature, balance and climbing



Footpaths retained open throughout the year by removing fallen branches, adding drainage, reprofiling, relocating, installing stepping stones



Circular secondary routes to enable leisure use such as dog walking, running or nordic walking.



Safe and legible footpath routes, ensuring sightlines around corners are maintained. Main routes should be signed with bold contemporary graphics

# Landscape Masterplan Concept: Concept: Water and Drainage Strategy



Enhance the resilience, connectivity, safety and quality of existing water features for nature and the local community. Improve accessibility and usability of grassland by diverting winter flood water to create new wetland features for wildlife.



Connected blue infrastructure corridors and habitats



Remediation of flooding at the northern entrance



New ephemeral wetland to diversify habitat, improve linkages and enable play area drainage



Wetland features to be multi-functional, support BNG goals, and zoned to provide recreation, play and wildlife habitat



Diverse wetland features with rich vegetation structure and habitat value



Risk-assess access to wetland features. Design embankments to provide escape points

# The Bonc Masterplan

## Action Plan: Access



### Active Travel Path:

**Standard:** To LTN 1/20 standard;

**Route:** As direct as possible;

**Gradient:** 1:21 where possible. 1:40 camber:

**Dimensions:** 2m (minimum)-3m(Preferable) wide footpath to permit 2 cycles passing. Additional 0.5m-1m wildflower verge may be required between cycle path and vertical objects.

**Surface option 1:** Surface coarse: 20mm Tarmac. Binder coarse: 60mm asphalt concrete with a coarse stone.

**Surface option 2:** Recycled rubber/ stone aggregate porous path such as KBI Flexipave. Construct above existing levels;

**Base coarse:** Suitable for CBR.

**Edging:** Concrete EF kerb;

**Lighting:** Lux levels with facial recognition in accordance with CIE115 / 2010 and European Standard EN 13201-2 (40% average/minimum uniformity), wildlife friendly light fitting, sensor controlled. Switched off between midnight and 5am to protect.

**Gates and Entrances:** To LTN 1/20 standard, suitable for non-standard and cargo bikes

**Interpretation:** Route planning and community events interpretation panels

**Maintenance:** 2.4m head clearance. Remove leaf mould in autumn and retain route ice-free in winter;

# The Bonc Masterplan

## Action Plan: Access



### Leisure Path:

**Route:** As existing;

**Gradient:** 1:21 between entrance and playground where possible. 1:40 cross fall. Follow existing level in other locations;

**Dimensions:** 2m wide on maintenance vehicle routes. 1m wide in all other routes.

**Surface coarse:** 20mm Spray and chip with 6mm rounded stone. Binder coarse: 60mm asphalt concrete with a coarse stone or 'Smart Surface' <https://www.mackenzieconstruction.com/our-work/smart-surface/>

**Base coarse:** Suitable for CBR.

**Edging:** Concrete EF kerb; Construct above existing levels.

**Cycle and scooter parking:** Galvanised steel Sheffield cycle racks adjacent to playground;

**Lighting:** Route between entrance and playground to be lit. Lux levels with facial recognition in accordance with CIE115 / 2010 and European Standard EN 13201-2 (40% average/ minimum uniformity), wildlife friendly light fitting, sensor controlled. Switched off between midnight and 5am to protect.

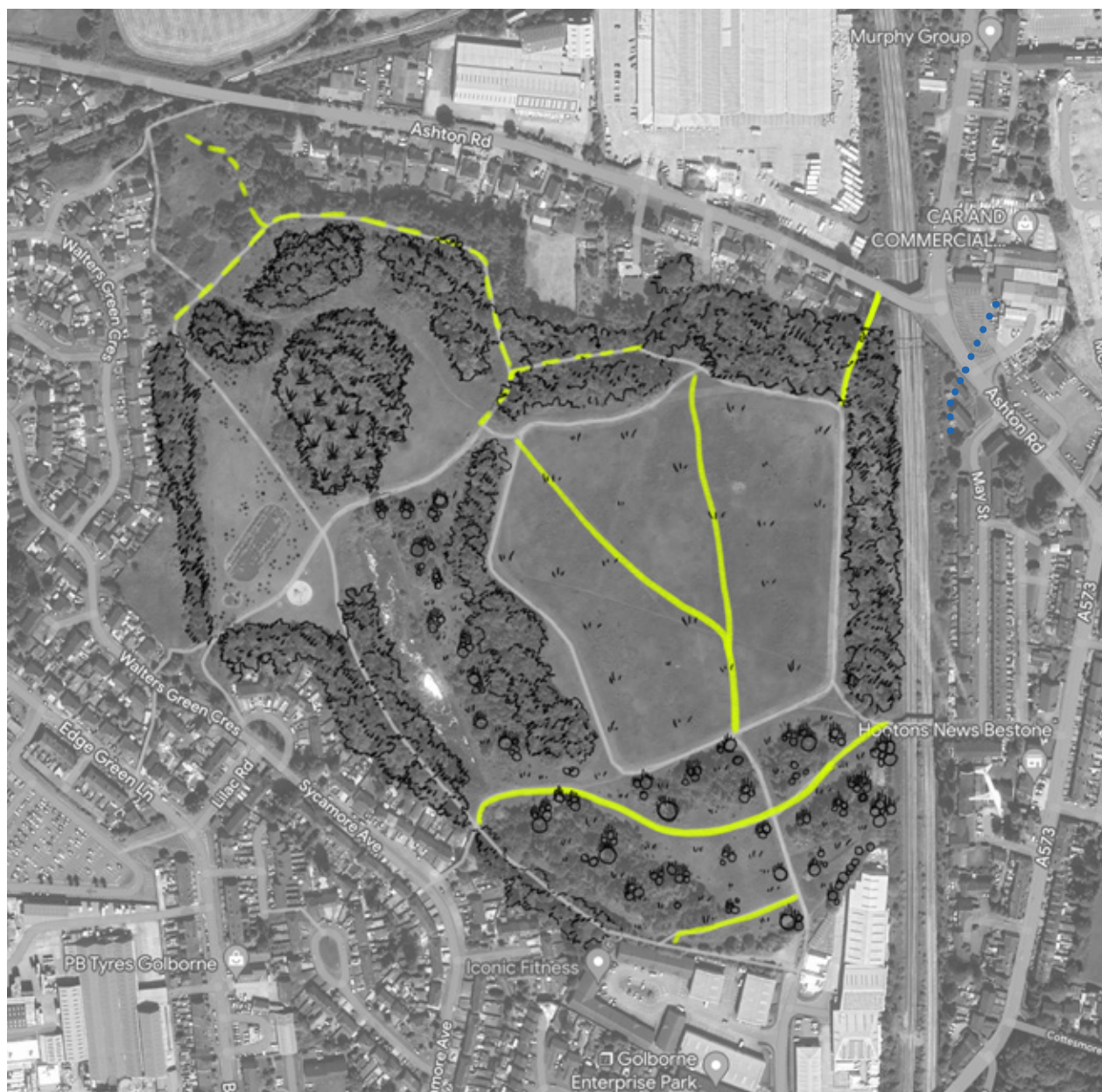
**Interpretation:** Design and install interpretation to bring the special ecological features of the Bonc alive.

**Maintenance:** 2.4m head clearance.

**Play:** This is the main play route and includes the route to formal play areas, and 'Play on the way' play features and objects

# The Bonc Masterplan

## Action Plan: Access



### Adventure Path:

**Route:** As existing;

**Gradient:** Follow existing level;

**Dimensions:** Varied widths. Minimum 60cm.

**Surface coarse:** 100mm compacted ultitrec on steep and muddy areas. (file:///Users/reshaped/Downloads/ULTITREC%20brochure.pdf) As dug surfacing in flat and dry locations. 50mm depth 5mm (0/5) graded 'as dug' surfacing, laid and compacted to max. 1:40 (2.5%) crossfall or min. 1:50 (2%) camber: Compacted to refusal using heavy vibrating roller (min. 120type recommended). 'As Dug' material to be free draining, naturally occurring sands and gravel with sufficient clay content to bind the material together when compacted.

**Base coarse:** Suitable for CBR.

**Edging:** Tantalised timber edging;

**Steps:** Concrete riser with ultitrec tread

**Stream crossings:** Stepping stones

**Play:** 'Play on the way' natural play features

**Maintenance:** 2.4m head clearance. Retain minimum footpath widths;

## The Bonc Masterplan

### Action Plan: Landscape and Ecological Enhancements



#### Steeply Sloping Woodland Zone:

- Diversify age structure of woodland by planting long lived species;
- Review climate and disease resilience of existing trees and create management plan to replace species that are likely to die;
- Provide resources and habitat structures to encourage use of site by BAP species;
- Bring woodland into a favourable condition, Improve vegetation structure and winter feeding, nesting, hibernation resources including planting native plants with berries, fruits and thorns;
- Improve attractiveness of woodland by planting natives with colourful leaves and stems such as cornus, salix, beech, hornbeam and beech;
- Install bat boxes in trees.

#### Wet Woodland Zone:

- Carry out action plan for Woodland Zone;
- Construct water sensitive design works including inlet from grassland play land drain into the wet woodland and outfall into the Lake Zone.

#### Steeply Sloping Wood Pasture Zone:

- Plant new long lived, climate and disease resilient trees within the existing grassland.

#### Plateau Meadow Zone:

- Bring meadow into a favourable condition, diversify existing grassland and meadow;
- Install community hangouts and benches adjacent to the woodland;
- Sensitively improve existing footpath routes around and through the space in accordance

with secondary footpath strategy;

- Consider commissioning an environmental artworks at the centre of the plateau.

#### Grassland Play Zone:

- Install land drains and SuDS features to create dry areas for footpaths and play;
- Create a new play and sports area on the existing tarmac MUGA including multi-gym, small MUGA, multi-age play equipment, learning to ride' running track and seating/ picnic area;
- Install zip lines and skateparks on embankment slopes;
- Plant new play copse tree planting and natural play features to provide a setting for new play areas and diversify play opportunities.
- Improve footpaths and active travel routes in accordance with the primary footpath strategy.

#### Picnic and Play Lawn:

- Maintain grassland as short mown lawn for informal kickabouts, community gatherings and picnics;
- Retain open views throughout this area to ensure legibility of the park.

#### Ecological Zone:

- Carry out ecological assessment and identify measures to improve the ecology of this area. This may involve creating a new wet meadow area or delivering on Wigan's BNG commitments;
- Filter views of adjacent housing to provide a natural context, whilst also retaining the informal surveillance that views from upstairs windows provide;

#### Open Water and Stream Zone:

- Explore and resolve footpath flooding. Carry out measures to protect adjacent housing where necessary;
- Bring wetland into a favourable condition, Increase diversity of habitats, and increase depth of wetland to manage spread of reeds;
- Provide resources and habitat structures to encourage use of site by locally rare species such as the Bittern and migratory birds
- Build stepping stone or recycled timber bridge over stream
- Improve attractiveness of wetland by brightly coloured willow and cornus planting;
- Remove tree branches where blocking footpaths

#### Lake Zone:

- Identify habitat improvements along ecology edge to provide habitat for BAP species and migratory birds;
- Manage existing reed beds including removing silt, remove bikes and rubbish, restricting spread to retain areas of open water;
- Fish restocking programme;
- Inspect and remediate any issue with lake headwalls to ensure desired water level;
- Carry out ROSPA access to water risk assessment;
- Create escape points and install buoys along recreation edge;
- Install fishing platforms along recreation edge

# The Bonc Masterplan

## Action Plan: Play Zones



### 1: Active Formal Play:

- Design and install multi-generational, inclusive play equipment including group swings, climbing nets and picnic area. Equipment to be vandal resistant and metal.

### 2: Formal Sport:

- Design and install small MUGA, ninja play equipment, learning to ride and running track;
- Ensure zone meets Make Space for Girl's guidance.

### 3: Informal Sport:

- Maintained grass at a suitable height for rounders, kickabouts and community events.

### 4: Adventurous Sport and Zipline:

- Design and install zipline, BMX track and skate/ scooter track on the side of the slope.

### 5: Active Community Play on the Way:

- Install equipment that takes advantage of the site's topography and provide teen and community 'hang out' areas. Equipment should encourage children to explore the landscape next to the path, be vandal resistant, metal, without a roof such as group swings and embankment slides.

### 6: Natural Play on the Way:

- Install local sandstone climbing boulders, climbing trees and features as places to rest, sit and play.

### 7: Natural Water Play on the Way:

- Design and install fishing platforms, stepping stones and balance beams over streams.